

THE MOONBOUNCE GROUP

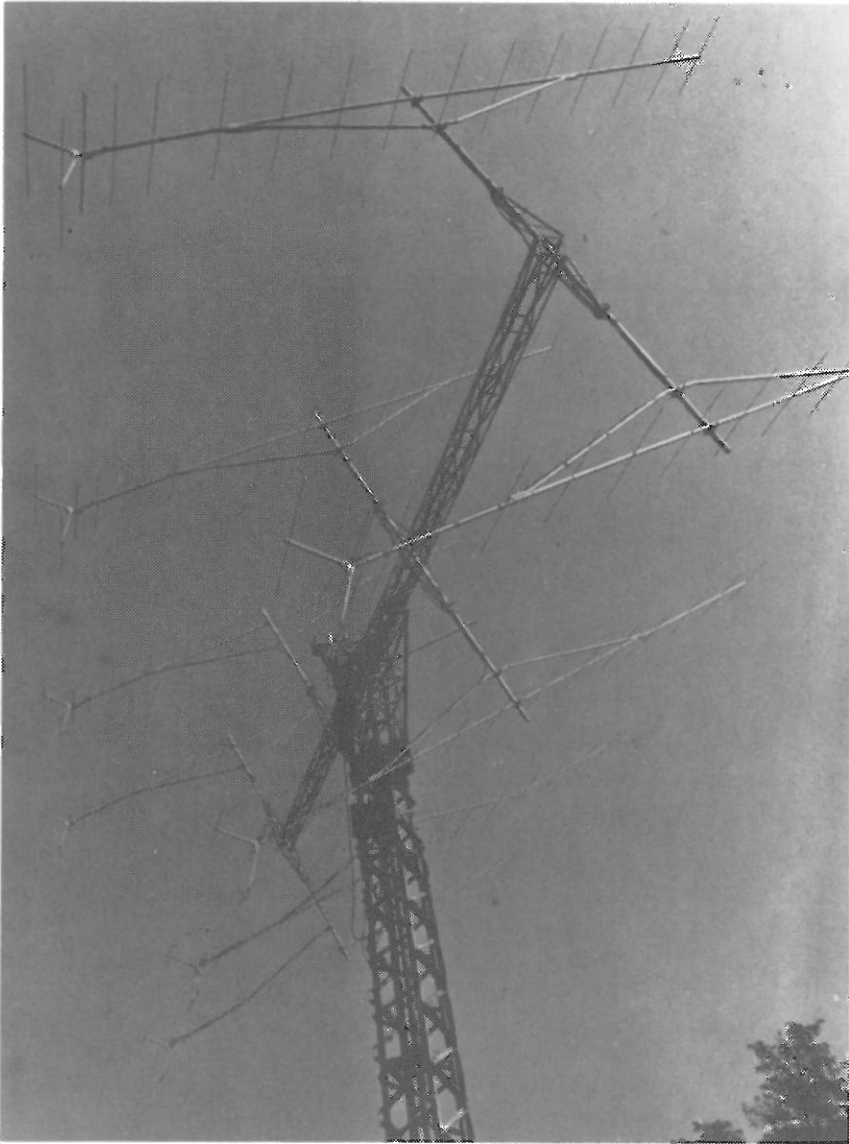
PART 4



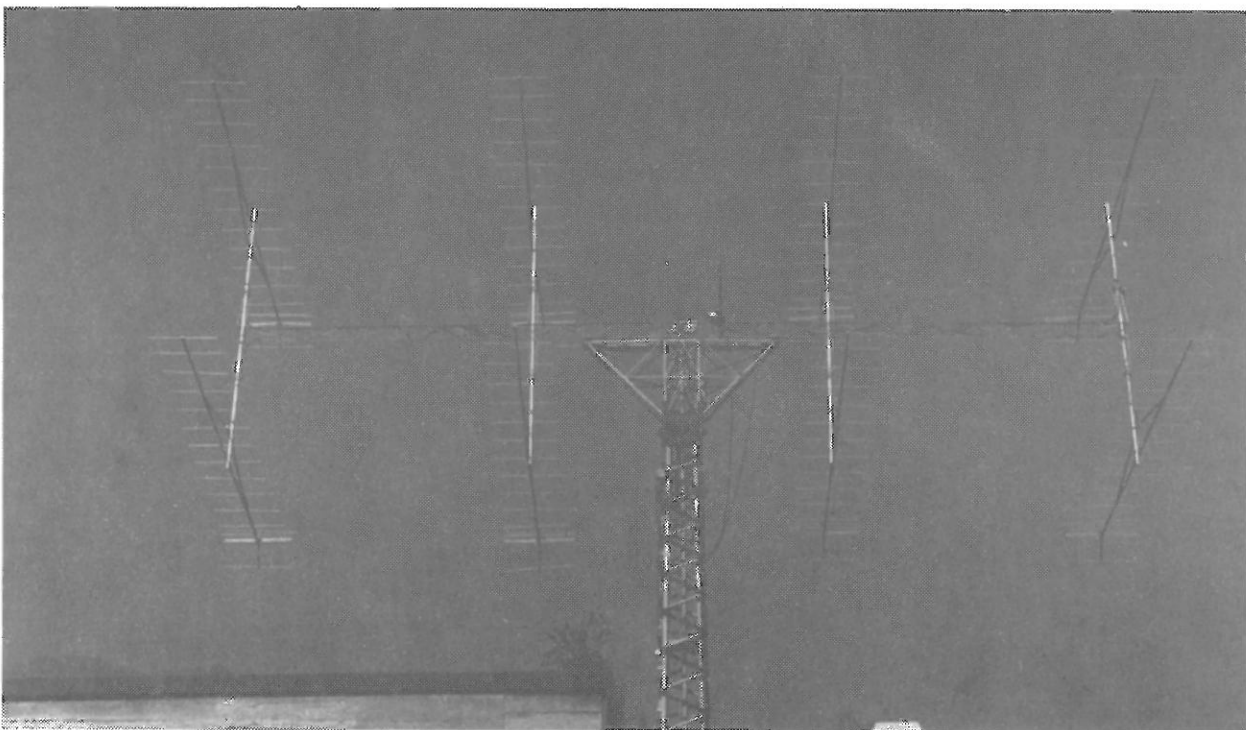
The dish of WØMDL is on an MPQ-10 RADAR mount for fast getaway. It is controllable in azimuth and elevation with Selsyn readout in the shack. The dish has a dual dipole feed for horizontal and vertical polarity.

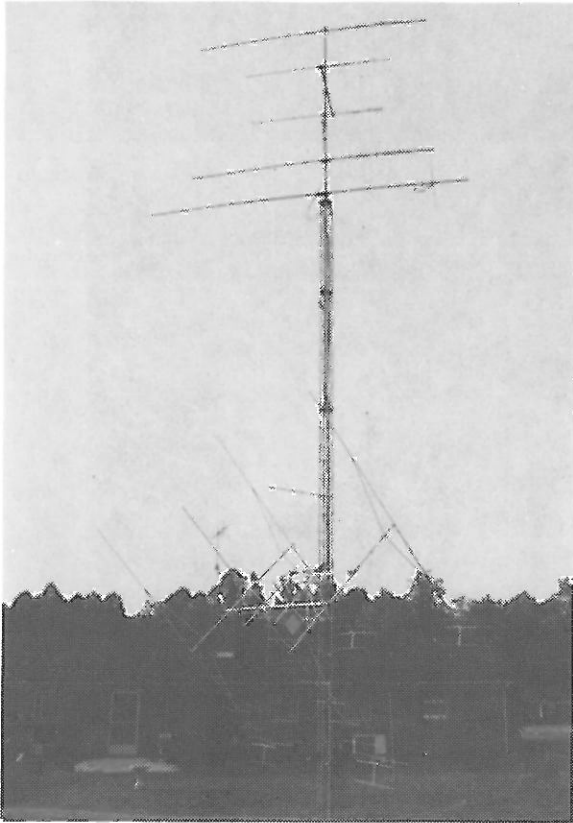


varian, EIMAC division
301 industrial way
san carlos, california 94070

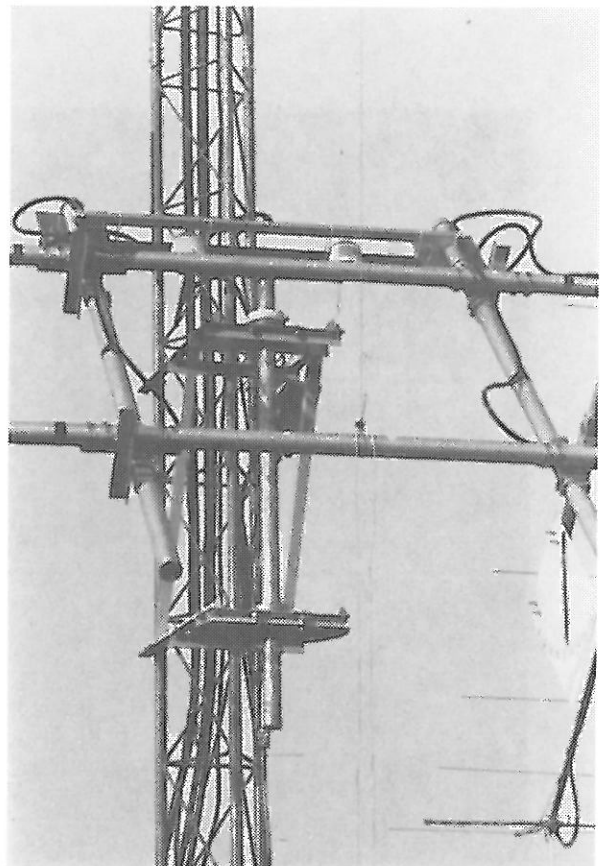
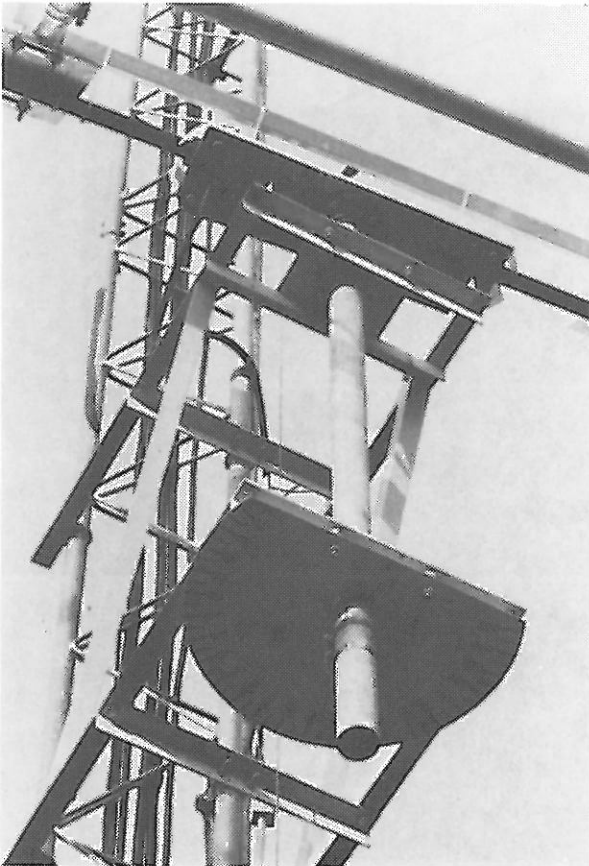


These are pictures of the I2MBC array. The antennas are 16 element Tonna(F9FT) yagis. The tower is 65 feet high, self-supporting and entirely homemade.



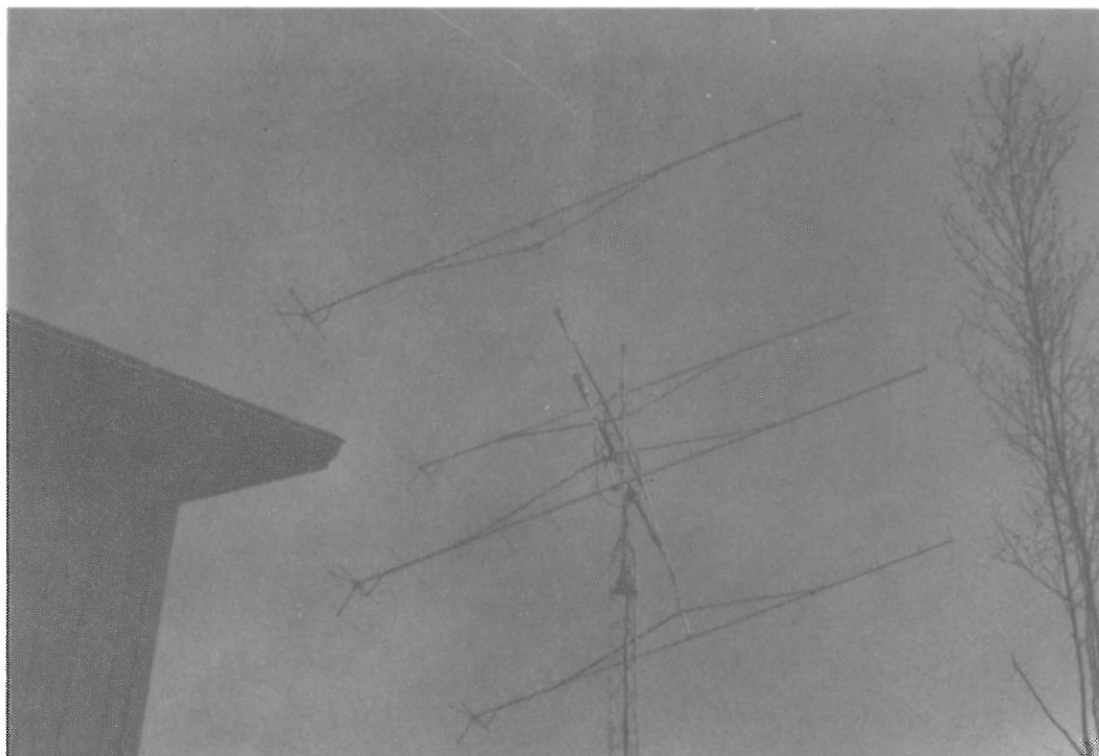


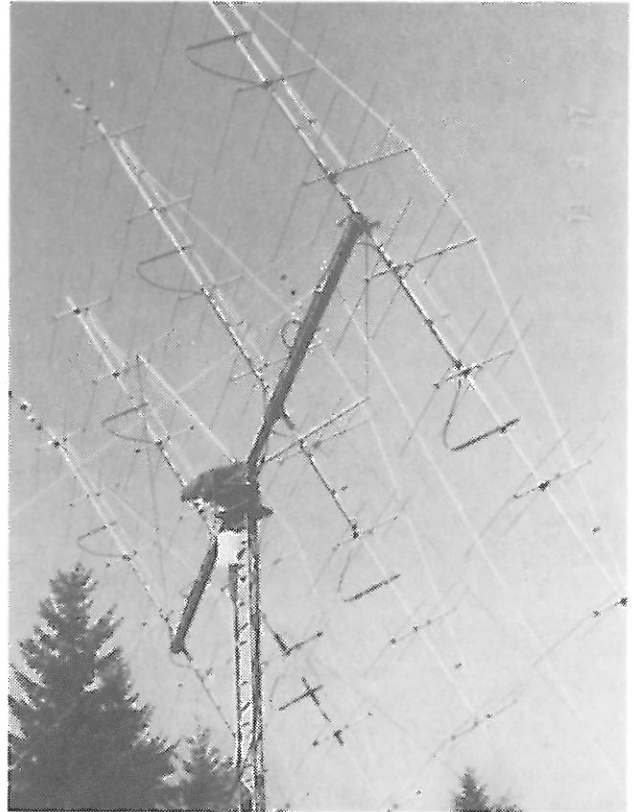
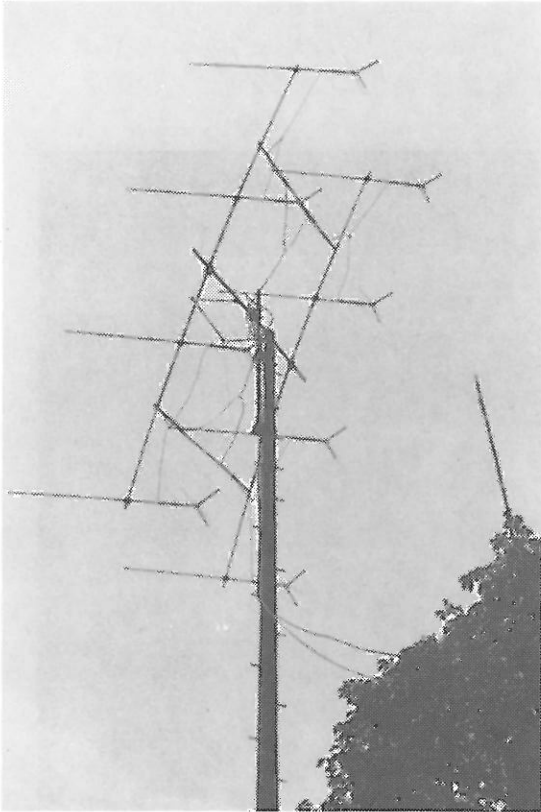
This is the antenna farm of WB4EXW. The EME array is mounted on the side of the tower and consists of four 16 element F9FT yagis. The two bottom pictures show a closeup look at the azimuth and elevation readout system.





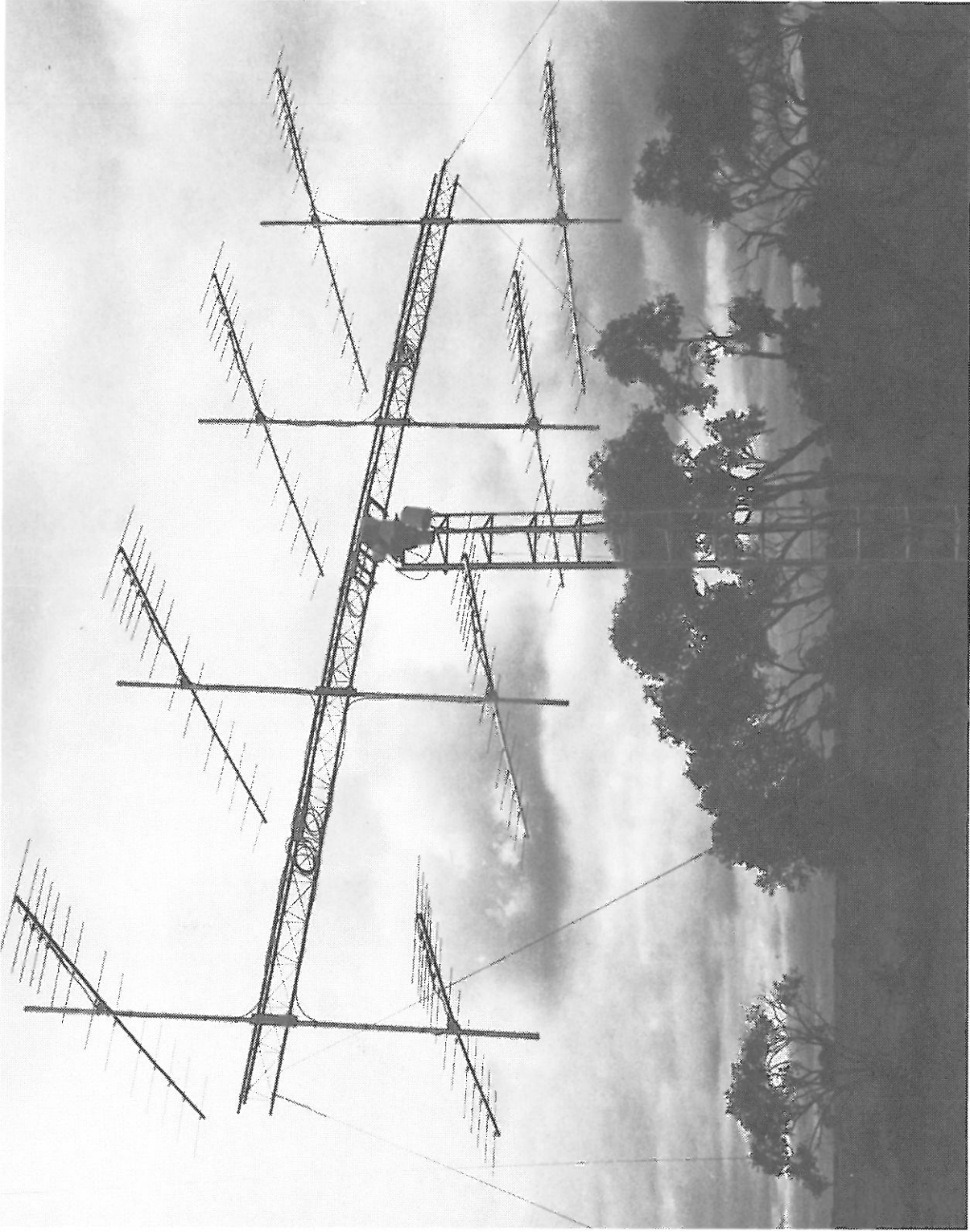
The man installing the four 16 element F9FT antennas is Jim Larsen, WAØLPK/KL7. The finished installation is shown in the bottom picture.



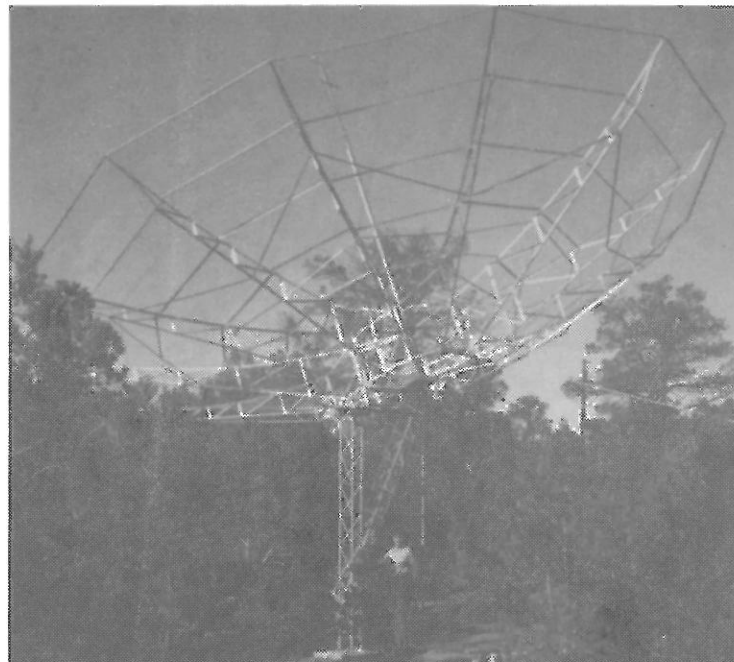
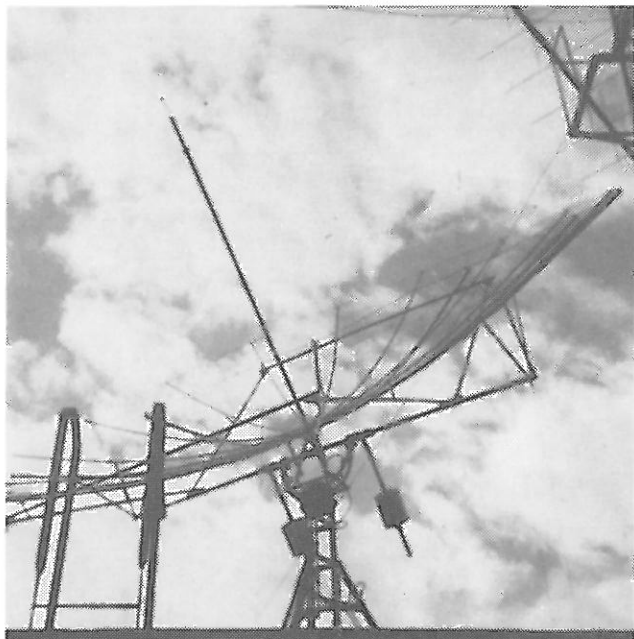


At the upper left is the eight 10 element yagi array of JA9BOH. The refurbished 160 element array of VE7BQH appears at the upper right. The array at the bottom was used by WA1JXN when he was operating from Vermont. The eight yagis are the 16 element F9FT antennas.





The eight 14 element KLM yagi array above belongs to WBØYSG.



The dish at the upper left is used by LU3AAT.
The 32 foot dish at the upper right is used
by K5FF and W5FF. The eight meter dish shown
at the bottom is used by SM6CKU.

